

Field Test Report

Overview

Program Title: Introduction to Greenfield Lake Park

Target Audience: This module is designed to provide general information for visitors to Greenfield Lake Park and will potentially be used by both adults and children. The age, educational levels and computer abilities of adult visitors will vary greatly and therefore, the module will need to be user friendly on an introductory level. This will also allow the module to be easily accessible to a wide range of children. The program will target both new and returning visitors to the park. The target audience will need to have basic computer skills, including knowledge of how to access a website.

Major Goal: Students were introduced to features of Greenfield Lake Park, including history, orientation, birds, tree, safety and the environment.

Program Description

Instructional Objectives:

Table 1

#	Objectives
1	Given a list of statements, the learner will identify true statements on the history of Greenfield Lake.
2	Given a list of activities, the learner will identify activities that can be included in a day's visit to the park.
3	Given two videos, the learner will identify the video that shows the safest boating behavior.
4	Given pictures of trees, the learner will identify the species common names.
5	Given pictures of birds, the learner will identify the species common names.
6	Given a list of possible factors, the learner will identify factors that contribute to the growth of algae in Greenfield Lake.

Materials:

The materials for the Greenfield Lake Park module, which had been uploaded to the UNCW server, and a paper-based pre and post test (see Appendix A).

The instructional module included instructional content, review, practice activities and post tests.

Tryout

Participants: The module was tested on

Process: A paper-based pretest was administered at the beginning by the evaluator. After completion, each participant was provided with the site link for the instructional module. The evaluations were conducted one-to-one, and all participants were observed during the review of the module. After completion of the module, each participated completed a paper-based posttest and a survey (Appendix B) to collect their attitudes toward the module.

Data Sources:

Pretest and Posttest: Both the pretest and posttest had two questions for each of the six objectives. The objectives were tested using multiple choice and drop and drag items. The tests were paper-based.

The comparison of the data between the pre and posttest is used to assess the overall learning of the students. Test data also identified learner’s knowledge of specific objectives.

Student attitude survey: The attitude survey consisted of six sections

Observations:

Data-collection procedures:

Results

Test performance:

Table 2

Pretest and Posttest Mean Percentages Scores by Objectives				
Objectives	Pretest Mean	% Pretest Mean	Posttest Mean	% Posttest Mean
History				
Orientation				
Safety				
Trees				
Birds				
Environment				

Table 3

Pretest and Posttest Mean Percentages Scores by Participant				
# Participant	Pretest Mean	% Pretest Mean	Posttest Mean	% Posttest Mean
Participant 1				
Participant 2				
Participant 3				
Participant 4				
Participant 5				
Participant 6				

Student attitude:

Likert Scale

Analysis of Attitude Survey

Table 4

#	Question	Strongly Agree	Agree	Unsure	Disagree	Strongly Disagree	Mean
		5	4	3	2	1	
Site Validity							
1	Module authors are available.						
2	The purpose and/or goals of the module are clearly stated.						
3	The information presented is educationally significant.						
4	The information was presented in a manner that made it easy to understand.						
5	The information presented was appropriate in length.						
6	The concepts presented are valid.						
7	Practice activities are sufficient to assist with learning.						
Structure							
8	The module provides easy to follow steps with guidance and/or suggestions.						
9	The module is organized so that the display and navigation controls are understandable.						
10	The module makes it easy for the user to move forward or backward through the site.						
Navigation & Function							
11	The module provides access to the main menu from all pages.						
12	The design minimizes the possibility of the user getting “trapped” in exercises.						
13	The software provides feedback to user’s responses.						
14	The application does not require extensive documentation, technical support, and/or instruction for successful usage of the software.						
Format & Layout							
15	The layout guides the user through each page in a logical sequence.						
16	The displays within the module are clear, easy to view and provide the content without crowding the screen.						

Format & Layout (continued)							
17	The module's theme (color, icons, etc) supports its functions and content, providing visual consistency.						
18	The graphics were integrated with text to support learning.						
Overall Features							
19	The overall quality of the instruction is good.						
20	I learned a lot from this module.						
21	The information provided was about the right technical level for me.						
Totals							

Open ended questions:

Observations:

Revisions

Appendix A: Test

Greenfield Lake Park

Name: _____

Date: _____

1. Place a check in the box(s) to the left of each true statement regarding Greenfield Lake Park.

- The City of Wilmington purchased the property in 1925.
- A world record dance contest was held at Greenfield Lake Park in 1923.
- A five mile road was build around the lake during World War II.
- Greenfield Lake was originally owned by Dr. Samuel Green.
- During the early 1900's, the lake was so clear you could see clearly to the bottom.

2. Place the correct letter in the blank next to the text description to match the description with the appropriate picture.

_____ Dr. Samuel Green



A

_____ Howard & Wells Amusement Company



B

_____ Commissioner Wade



C

_____ Depression Era



D

3. Place a check next to the activities you and your family can participate in while at Greenfield Lake Park.

- Canoeing
- Fishing
- Swimming
- Renting paddle boat
- Use the boat ramp to place your small boat into Greenfield Lake

4. Place a check in the box(s) to the left of each true statement regarding Greenfield Lake Park

- Picnic shelters can be reserved through New Hanover County Parks Reservation Center
- Motorized vehicles or skateboard are not allowed on the trail
- Keep the park clean by using designated receptacles to dispose of pet waste.
- North Carolina requires individuals to purchase a fishing permit to fish in Greenfield Lake
- Paddleboats, canoes and kayaks are available for rent in the boathouse.

5. Place the correct letter in the blank next to the text description to match the description with the appropriate picture.

_____ Southern Magnolia

_____ Longleaf Pine

_____ Bald Cypress

_____ Loblolly Pine



A



B



C



D

6. Check the box next to the tree that has fragrant white flowers in Spring?

- Longleaf Pine
- Loblolly Pine
- Southern Magnolia
- Bald Cypress

7. Place the correct letter in the blank next to the text description to match the description with the appropriate picture.

_____ Laughing Gull

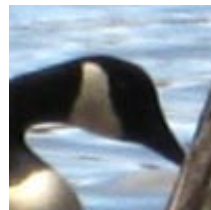
_____ Canada Goose

_____ Mallard

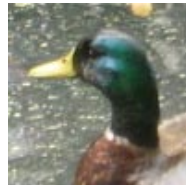
_____ Herring Gull



A



B



C



D

8. Place a check in the box next to the bird that is known for its “laughing” call.

- Herring Gull
- Laughing Gull
- Canada Goose
- Mallard

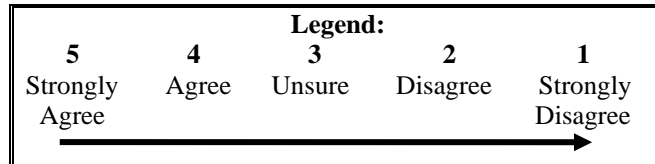
5.

Appendix B: Survey

Greenfield Lake Park

Name: _____

Date: _____



Please rate your level of agreement with the following statements on a scale of 5-1 by placing a “√” or an “x” in the appropriate box to the right of the statement. Use the comment section to make note of specific questions or concerns you find while reviewing each section.

Site Validity							
#	Question	Strongly Agree	Agree	Unsure	Disagree	Strongly Disagree	Comments
		5	4	3	2	1	
1	Module authors are available.						
Content							
2	The purpose and/or goals of the module are clearly stated.						
3	The information presented is educationally significant.						
4	The information was presented in a manner that made it easy to understand.						
5	The information presented was appropriate in length.						
6	The concepts presented are valid.						
7	Practice activities are sufficient to assist with learning.						

Structure							
#	Question	Strongly Agree	Agree	Unsure	Disagree	Strongly Disagree	Comments
		5	4	3	2	1	
8	The module provides easy to follow steps with guidance and/or suggestions.						
9	The module is organized so that the display and navigation controls are understandable.						
10	The module makes it easy for the user to move forward or backward through the site.						
Navigation & Function							
11	The module provides access to the main menu from all pages.						
12	The design minimizes the possibility of the user getting “trapped” in exercises.						
13	The software provides feedback to user’s responses.						
14	The application does not require extensive documentation, technical support, and/or instruction for successful usage of the software.						
Format & Layout							
15	The layout guides the user through each page in a logical sequence.						
16	The displays within the module are clear, easy to view and provide the content without crowding the screen.						

Format & Layout (continued)							
#	Question	Strongly Agree	Agree	Unsure	Disagree	Strongly Disagree	Comments
		5	4	3	2	1	
17	The module's theme (color, icons, etc) supports its functions and content, providing visual consistency.						
18	The graphics were integrated with text to support learning.						
Overall Features							
19	The overall quality of the instruction is good.						
20	I learned a lot from this module.						
21	The information provided was about the right technical level for me.						
We would appreciate your comments to the following questions. Thank you for your time in completing this evaluation.							
22	What did you like best about the Greenfield Lake Park module?						
23	What did you like least about the Greenfield Lake Park module?						
24	Do you have any further suggestions for improvements to this module?						

